

Product Sheet

H_EGFR WT BAF3 Cell Line

Catalog number: GM-C28267

Version 3.3.1.250117

EGFR is a member of the receptor tyrosine kinase (TK) family and is widely distributed on the surface of mammalian fibroblasts, epithelial cells, and other cell types. The EGFR signaling pathway plays a crucial role in cellular processes such as proliferation and differentiation. When EGFR is mutated, it results in the continuous activation of the EGFR signaling pathway without ligand binding, leading to abnormal cell proliferation. EGFR mutations have been identified in various tumors, including non-small cell lung cancer, breast cancer, colon cancer, and head and neck squamous cell carcinoma (HNSCC). There are several tyrosine kinase inhibitors (TKIs) targeting EGFR mutations, such as Afatinib, Erlotinib, Gefitinib, Osimertinib (AZD 9291), and Cetuximab.

BA/F3 cells are interleukin-3 (IL-3)-dependent precursor B cells. Some protein kinases can substitute for IL-3 to enable BA/F3 cell-dependent growth, and inhibitors can be used to antagonize this effect. This property can be utilized for research on kinase inhibitors.

H_EGFR WT BAF3 Cell Line is a clonal stable BaF3 cell line constructed using lentiviral technology, constitutive expression of the EGFR gene. Can be used for the development and validation of small molecule drugs targeting EGFR.

Specifications

Quantity	5E6 Cells per vial, 1 mL
----------	--------------------------

Product Format	1 vial of frozen cells
----------------	------------------------

Shipping	Shipped on dry ice
----------	--------------------

Storage Conditions	Liquid nitrogen immediately upon receipt
--------------------	--

Recovery Medium	RPMI 1640+10% FBS+1% P.S+10 ng/mL EGF
-----------------	---------------------------------------

Growth medium	RPMI 1640+10% FBS+1% P.S+10 ng/mL EGF+0.25 µg/mL Puromycin
---------------	--

Note	None
------	------

Freezing Medium	90% FBS+10% DMSO
-----------------	------------------

Growth properties	Suspension
-------------------	------------

Growth Conditions	37°C, 5% CO ₂
-------------------	--------------------------

Mycoplasma Testing	The cell line has been screened to confirm the absence of Mycoplasma species.
--------------------	---

Safety considerations	Biosafety Level 2
-----------------------	-------------------

Note

It is recommended to expand the cell culture and store a minimum of 10 vials at an early passage for potential future use.

Materials

Reagent	Manufacturer/Catalogue No.
RPMI 1640	gibco/C11875500BT
Fetal Bovine Serum	Cegrogen biotech/A0500-3010
Pen/Strep	Thermo/15140-122
Recombinant Human EGF	Beyotime/P5552
Puromycin	Genomeditech/ GM-040401
Osimertinib (AZD9291)	Selleck.cn/S7297
Erlotinib (OSI-774)	Selleck.cn/S7786
Afatinib (BIBW2992)	Selleck.cn/S1011
Recombinant Anti-EGFR Antibody [E235]	Abcam/ab32077
Anti-H_EGFR hIgG1 Antibody(Necitumumab)	Genomeditech/ GM-49155AB
GMTiter™ Luminescent Cell Viability Assay	Genomeditech/ GM-040504

Figures

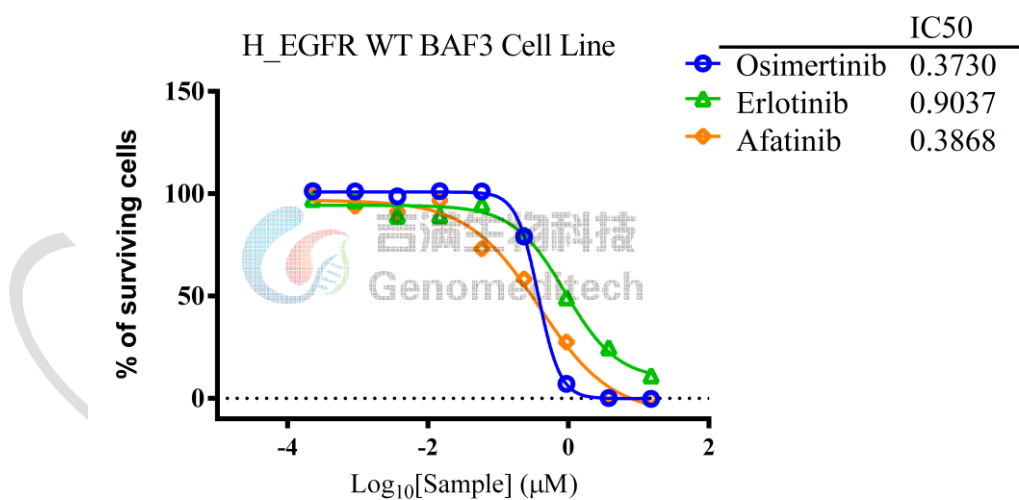


Figure 1 | Cell proliferation assay. The H_EGFR WT BAF3 Cell Line (Cat. GM-C28267) at a concentration of 1E4 cells/well (96-well format) was treated with serial dilutions of Osimertinib (AZD9291) (Selleck/S7297), Erlotinib (OSI-774) (Selleck/S7786), Afatinib (BIBW2992) (Selleck/S1011) in assay buffer (RPMI 1640 + 10% FBS + 1% P.S) for 72 hours. The firefly luciferase activity was measured using the GMTiter™ Luminescent Cell Viability Assay (Cat. [GM-040504](#)).

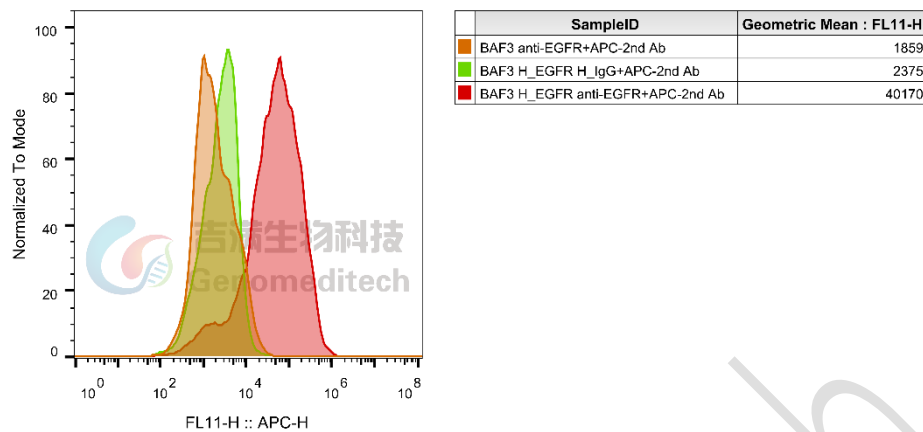


Figure 2 | H_EGFR WT BAF3 Cell Line (Cat. GM-C28267) was determined by flow cytometry using Anti-H_EGFR hIgG1 Antibody(Necitumumab) (Cat. [GM-49155AB](#)).

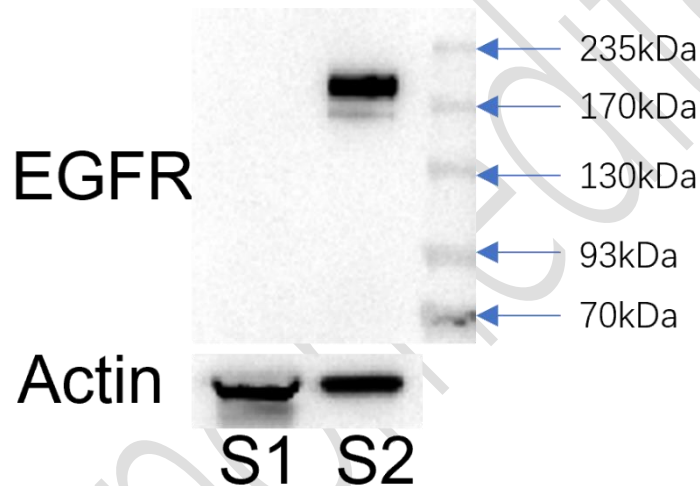


Figure 3 | The protein expression levels of Human EGFR in the H_EGFR WT BAF3 Cell Line (Cat. GM-C28267) were determined by Western blotting (WB).

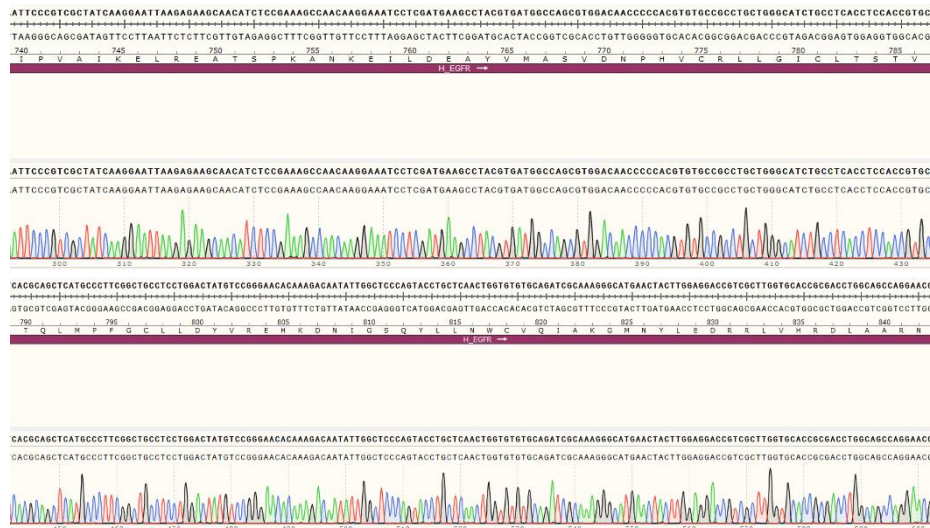


Figure 4 | The Human EGFR mutation analysis by Sanger sequencing.

Cell Recovery

Recovery Medium: RPMI 1640+10% FBS+1% P.S+10 ng/mL EGF

To insure the highest level of viability, thaw the vial and initiate the culture as soon as possible upon receipt. If upon arrival, continued storage of the frozen culture is necessary, it should be stored in liquid nitrogen vapor phase and not at -70°C. Storage at -70°C will result in loss of viability.

- Thaw the vial by gentle agitation in a 37°C water bath. To reduce the possibility of contamination, keep the O-ring and cap out of the water. Thawing should be rapid (approximately 2 - 3 minutes).
- Remove the vial from the water bath as soon as the contents are thawed, and decontaminate by dipping in or spraying with 70% ethanol. All of the operations from this point on should be carried out under strict aseptic conditions.
- Transfer the vial contents to a centrifuge tube containing 5.0 mL complete culture medium. And spin at approximately 176 x g for 5 minutes. Discard supernatant.
- Resuspend cell pellet with the recommended complete medium. And dispense the suspension into 1-2 T-25 culture flasks.
- Incubate the culture at 37°C in a suitable incubator. A 5% CO₂ in air atmosphere is recommended if using the medium described on this product sheet.

Cell Freezing

Freezing Medium: 90% FBS+10% DMSO

- Centrifuge at 176 x g for 3 minutes to collect cells.
- Resuspend the cells in pre-cooled freezing medium and adjust the cell density to 5E6 cells/mL.
- Aliquot 1 mL into each vial.

- d) Place the vials in a controlled-rate freezing container and store at -80°C for at least 1 day, then transfer to liquid nitrogen as soon as possible.

Cell passage

Growth medium: RPMI 1640+10% FBS+1% P.S+10 ng/mL EGF+0.25 µg/mL Puromycin

Approximately 48-72 hours after the initial thawing, the cells can be passaged for the first time. After this initial passage, the culture medium can be adjusted to growth medium supplemented with antibiotics. If cells are not passaged within 48 hours, it is recommended to add some fresh recovery medium and place the flask horizontally.

- When the cell density reaches 1 - 1.2E6 cells/mL, subculture the cells. Do not allow the cell density to exceed 1.4E6 cells/mL.
- It is recommended to use T-25 flasks for subculturing.
- These cells are suspension cells, and it is recommended to use the "half-medium change" method to maintain optimal cell conditions during passaging.
- During passaging, you can directly add fresh growth medium to the culture flask, gently pipette to resuspend the cells, and then transfer the cell suspension to a new T-25 flask for continued culture.

Subcultivation Ratio: Maintain cultures at a cell concentraion between 3E5 and 1E6 viable cells/mL.

Medium Renewal: Every 2 to 3 days

Notes

- These cells are sensitive to density, so please ensure that the cell density is maintained within an appropriate range during culture and subculturing.
- During the first passage, pay attention to the nutrient supply; if not subculturing, make sure to add fresh recovery medium every other day as needed.

Related Products

EGF:EGFR BAF3	
H_EGFR(A763-Y764-ins-FQEA-C797S) BAF3 Cell Line	H_EGFR(A763-Y764insFQEA-T790M) BAF3 Cell Line
H_EGFR(D770-N771insSVD-T790M) BAF3 Cell Line	H_EGFR(D770-N771insGF) BAF3 Cell Line
H_EGFR(D770-N771insGT) BAF3 Cell Line	H_EGFR(D770-N771-ins-SVD-C797S) BAF3 Cell Line
H_EGFR(Del19-C797S) BAF3 Cell Line	H_EGFR(Del19-T790M-C797S) BAF3 Cell Line
H_EGFR(Del19-T790M-L718Q) BAF3 Cell Line	H_EGFR(Del19-T790M-L718V) BAF3 Cell Line
H_EGFR(H773_V774insNPH-T790M) BAF3 Cell Line	H_EGFR(H773-V774insAH) BAF3 Cell Line
H_EGFR(H773-V774-ins-NPH-C797S) BAF3 Cell Line	H_EGFR(L747S-C797S) BAF3 Cell Line
H_EGFR(L747S-T790M-C797S) BAF3 Cell Line	H_EGFR(L747V-C797S) BAF3 Cell Line
H_EGFR(L858R-C797S) BAF3 Cell Line	H_EGFR(L858R-L718V) BAF3 Cell Line
H_EGFR(L858R-T790M) BAF3 Cell Line	H_EGFR(L858R-T790M-C797S) BAF3 Cell Line
H_EGFR(L858R-T790M-L718Q) BAF3 Cell Line	H_EGFR(L858R-T790M-L718V) BAF3 Cell Line
H_EGFR(L861Q-T790M-C797S) BAF3 Cell Line	H_EGFR(N771-P772insN) BAF3 Cell Line

H_EGFR(P772-H773insNPY764-V765insHH) BAF3 Cell Line	H_EGFR(R776G-C797S) BAF3 Cell Line
H_EGFR(T790M-C797S) BAF3 Cell Line	H_EGFR(T790M-L861Q) BAF3 Cell Line
H_EGFR(V769-D770insASV-T790M) BAF3 Cell Line	

Limited Use License Agreement

Genomeditech (Shanghai) Co., Ltd grants to the Licensee all intellectual property rights, exclusive, non-transferable, and non-sublicensable rights of the Licensed Materials; Genomeditech (Shanghai) Co., Ltd will retain ownership of the Licensed Materials, cell line history packages, progeny, and the Licensed Materials including modified materials.

Between Genomeditech (Shanghai) Co., Ltd, and Licensee, Licensee is not permitted to modify cell lines in any way. The Licensee shall not share, distribute, sell, sublicense, or otherwise provide the Licensed Materials, or progenitors to third parties such as laboratories, departments, research institutions, hospitals, universities, or biotechnology companies for use other than for the purpose of outsourcing the Licensee's research.

Please refer to the Genomeditech Cell Line License Agreement for details.